



# Air Impact Wrench

## 1) Technical Data: -

Drive Size	$\frac{3}{4}$ "
Model	PL – 40
Max Torque	1900 Nm
Free-load Speed	5500 RPM
Air Pressure	6-10kg/m <sup>2</sup>

## 2) Application

The tool is pneumatic wrench with the characteristics of large power, high efficiency, various application. Suitable for screw and unscrew work of big truck and lorry. Also can be used in the maintenance of bus and general Equipments of large machines.

## 3) Features

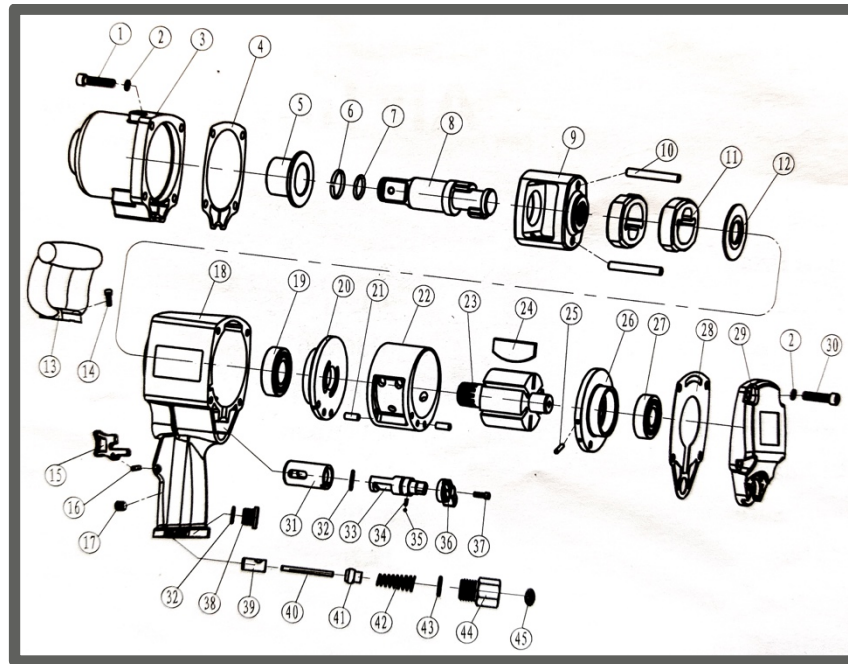
All the parts are processed by previous machine tool. The dimension of process face is very precious. All the material of impact structure is high quality steel.

The heat treatment system extend the service life. So it can stand large impact and wearing the tools with the ingenious structure, which make the operator feel comfortable and reduce the tire sense largely.

## 4) Operations & Maintenance

- a. The moisture of the air compressor and gas storage cylinder must be cleaned thoroughly. Air supply pipe is not allowed to leak gas.
- b. Check the air pressure meter whether the pressure is 8 Bar. The safe working pressure is within the range of 6 Bar.
- c. Make sure the tool can normally operate, please install the filter and automatic lubricator on the outlet of the air compressor.
- d. Without lubricator, please keep the air inlet mouth full of lubrication grease before and after working, which can reach the best performance (please use the professional grease of the air wrench).
- e. When the tool cannot work, please insert the lubrication grease which can make it turn. If always cannot remove the obstacle., please contact with the dealer.

## EXPLODED VIEW



## PARTS LIST

Part No	Description	Qty		Part No	Description	Qty
1	Screw	4		24	Rotor Blade	6
2	Spring Washer	8		25	End Plate Pin	1
3	Hammer Case	1		26	Rear End Plate	1
4	Hammer Case Gasket	1		27	Rear Bearing	1
5	Bushing	1		28	Rear Cover Gasket	1
6	Anvil Ring	1		29	Rear Cover	1
7	O-Ring	1		30	Screw	4
8	Anvil	1		31	Reverse Valve Busing	1
9	Hammer Frame	1		32	O-Ring	2
10	Hammer Pin	2		33	Reverse Valve	1
11	Hammer	2		34	Spring	1
12	Hammer Cage Washer	1		35	Steel Ball	1
13	Handle	1		36	Knob	1
14	Screw	2		37	Screw	1
15	Trigger	1		38	Aluminium Block	1
16	Trigger Pin	1		39	Throttle Valve Seat	1
17	Screw	1		40	Air Inlet Pin	1
18	Housing	1		41	Air Closer	1
19	Front Bearing	1		42	Air Inlet Spring	1
20	Front End Plate	1		43	O-Ring	1
21	Cylinder Pin	2		44	Air Inlet	1
22	Cylinder	1		45	Filter	1
23	Rotor	1				

## TRITORC FZC

P6-081, Saif Zone, Sharjah, PO Box 513586, U.A.E

Tel No: - +971 655 29407, Fax No: - +971 655 29405 Email: - sales@tritorc.com,